

Customer :

customer

Customer part :

customer part

Comment :

Comment

S1=5.85

S2=6.47

Tmax=470

Tp S2=509.0

PI=0.47

HI=89

Sample =1802.3

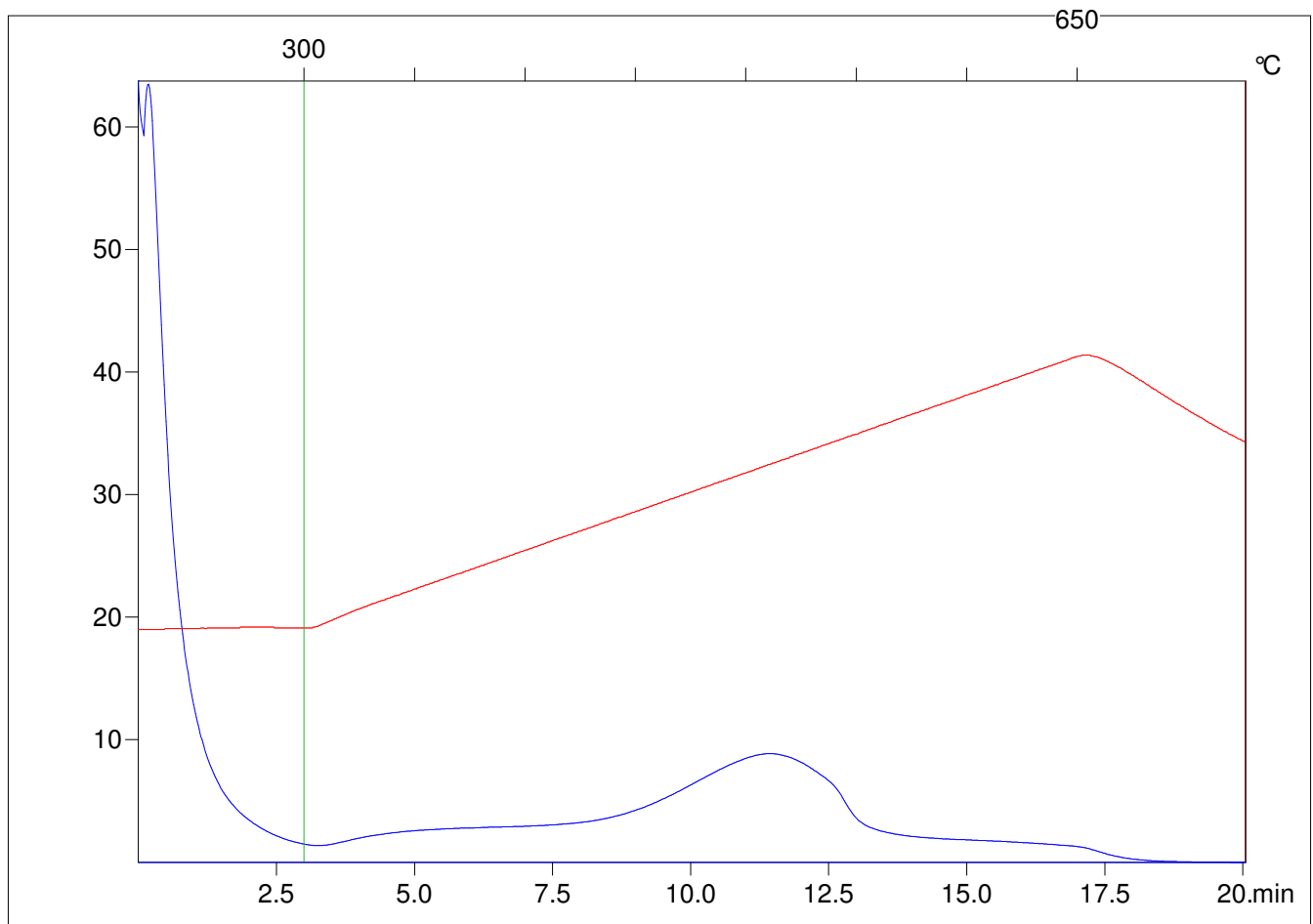
Method =Bulk Rock

Cycle=Basic

KFID(10*9)=1444

Qty =70.1

TOC=7.3



C:\VINC\PK4_1792\PK016.R00 : FID pyrolysis graphic

State

Pyro Status

Oxi Status